

# MITOAK MARRAZTEN



ENAUT



## **Eñaut Aiartzaguena Bravo**

[irribarrez.tirak@gmail.com](mailto:irribarrez.tirak@gmail.com)

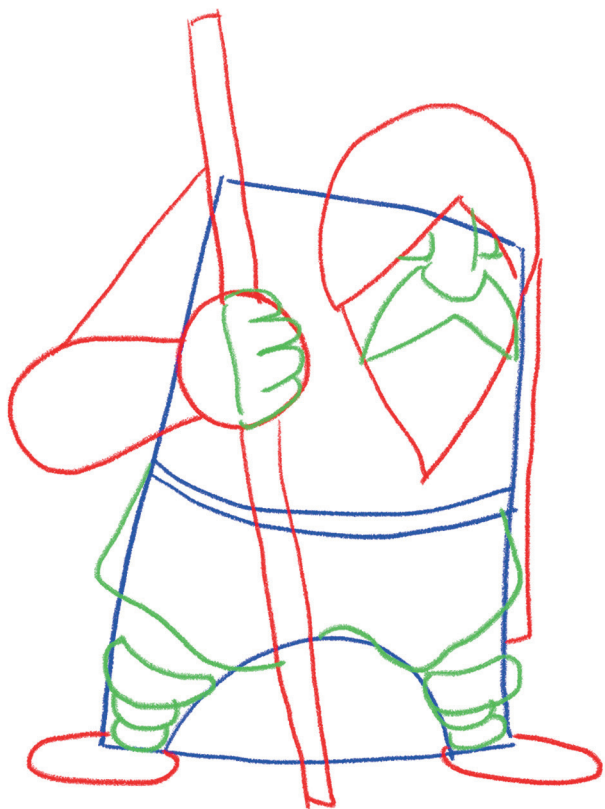
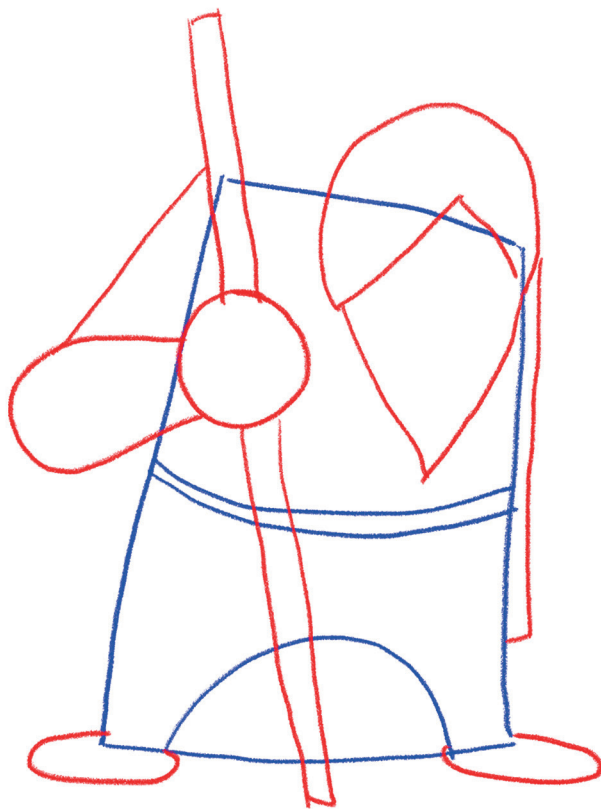
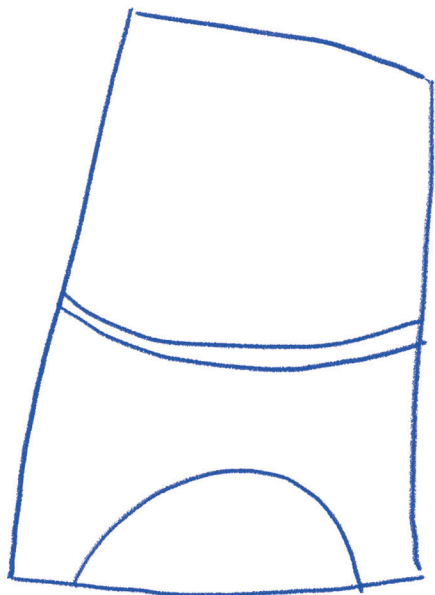
[irribarrez.info](http://irribarrez.info)

Liburuxka honetan euskal mitologiako pertsonaia ezberdinak marrazteko proposamen batzuk aurkituko dituzu. Marrazketa gaitasun ezberdinetara egokitzeko, pertsonaia batzuren marrazkiak beste batzuk baino sinpleagoak direla ikusiko duzu. Gainera, pertsonaia bakoitzaren ondoan honekin lotutako beste marrazki errazago bat ere aurkituko duzu. Hasi zaitetz errazen egiten zaizunetik eta marrazkiz marrazki baietz guztiak osatu!

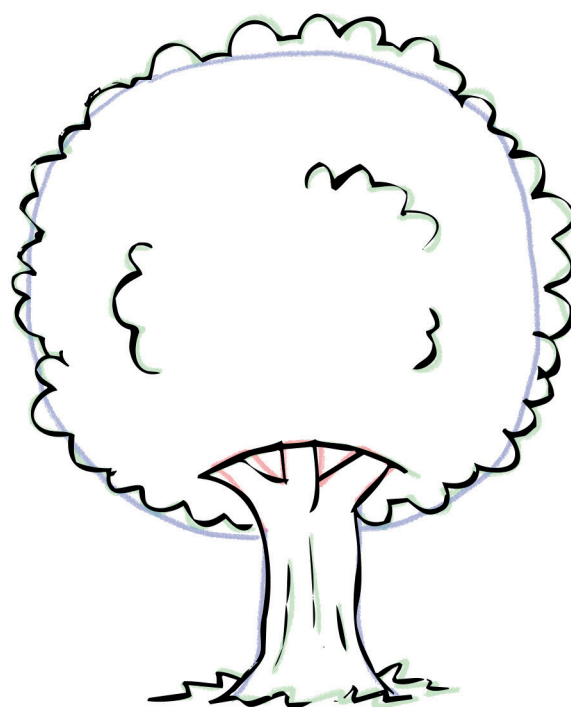
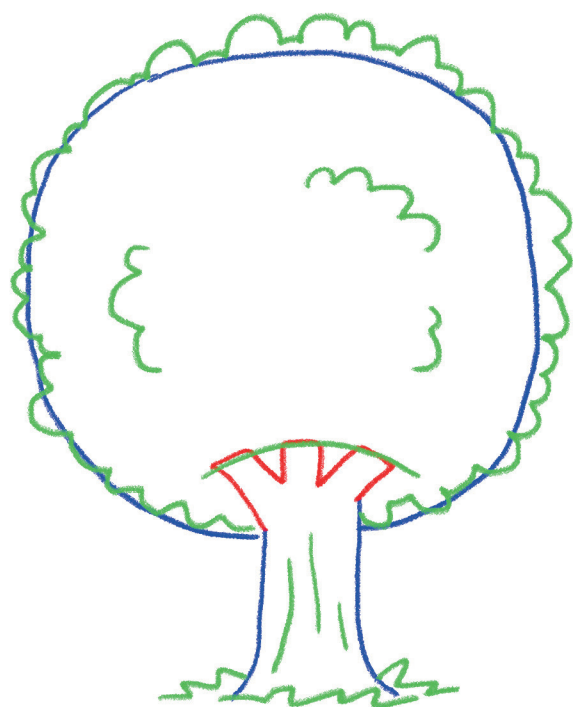
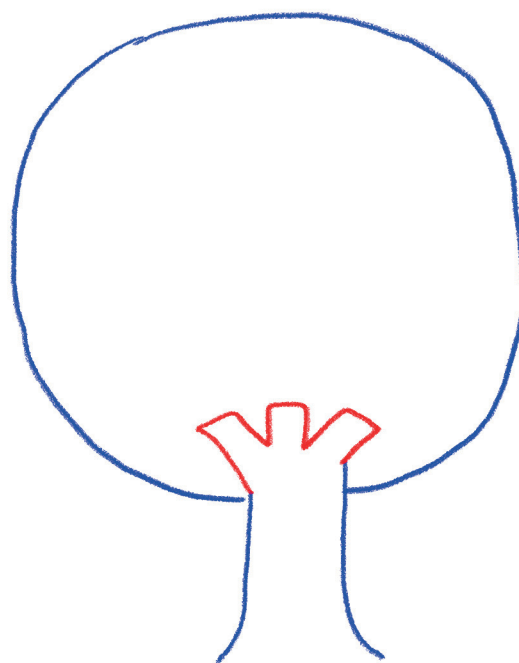
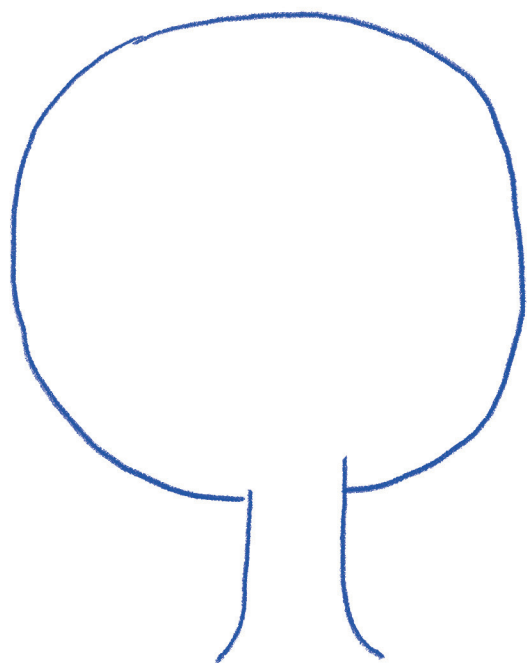
# Hainbat gomendio hasi aurretik

- Marrazten hasi aurretik zorrotzu ondo arkatza. Zehaztasuna irabaziko duzu eta trazua hobeto kontrolatuko duzu.
- Ez sakatu gogor arkatzari. Marrazte prozesuan, pausoak jarraituta, azken marrazkian egongo ez diren hainbat trazu egingo ditugu eta arkatzaz gogorregi sakatuz gero, zaila izango da ezabatzea.
- Marrazkiaren forma orokorretatik hasi. Hurrengo irudietan azaldutako pausuak proposamen batzuk baino ez dira, ez dira zertan zehatz jarraitu behar. Alabaina, forma orokor eta errazetatik hasita errazago eraikiko dugu marrazkia.
- Marrazkiaren eskema eginda, errepasatzerakoan, eman bidea irudimenari. Lerroetatik ateraz gero, ez arduratu, atera zirriborro horretan zuk zeuk ikusten duzun marrazkia argitara.
- Marrazkiak koloreztatzekotan, arkatzak edo margoak erabili behar badituzue, ez sakatu gogorregi hauekin ere. Haurrak, koloretako arkatzekin, gogorregi margotzera behartzen ditugu sarritan, zuriunerik utzi gabe. Margoeak, baina, ñabardura aniztasun zabalagoa eskaintzen dute tarteka suabe eta tarteka gogor margotuz gero.

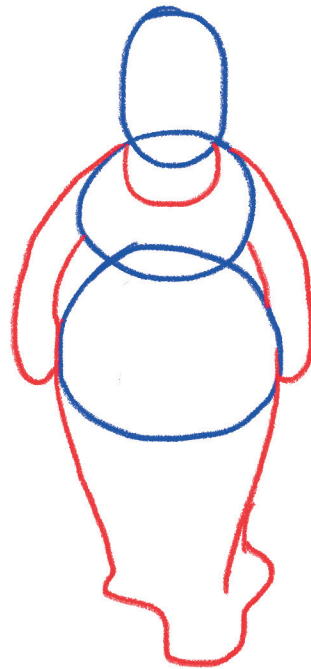
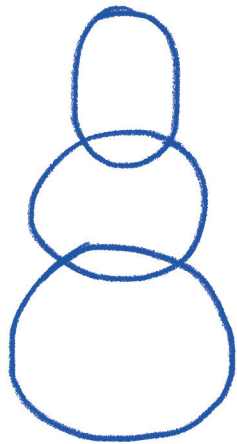
# Basajauna



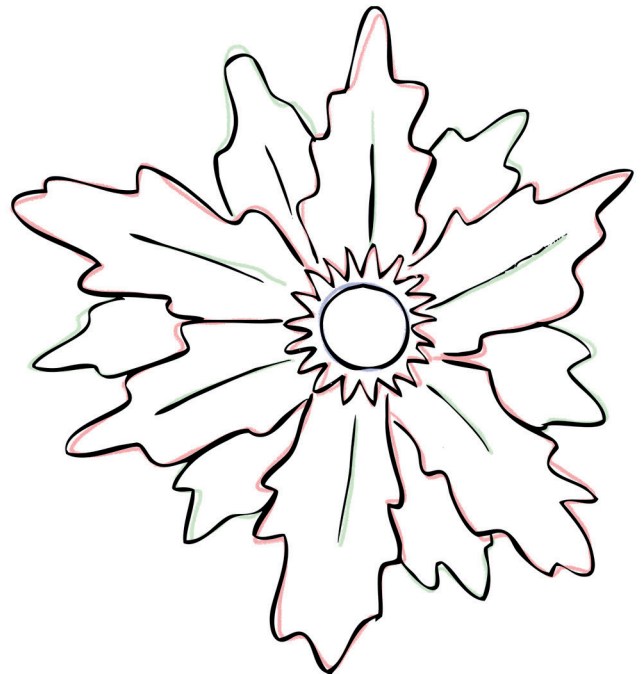
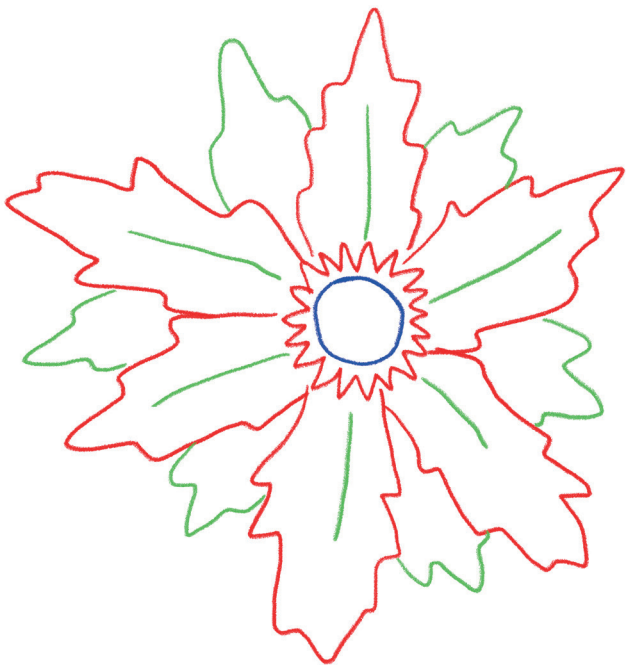
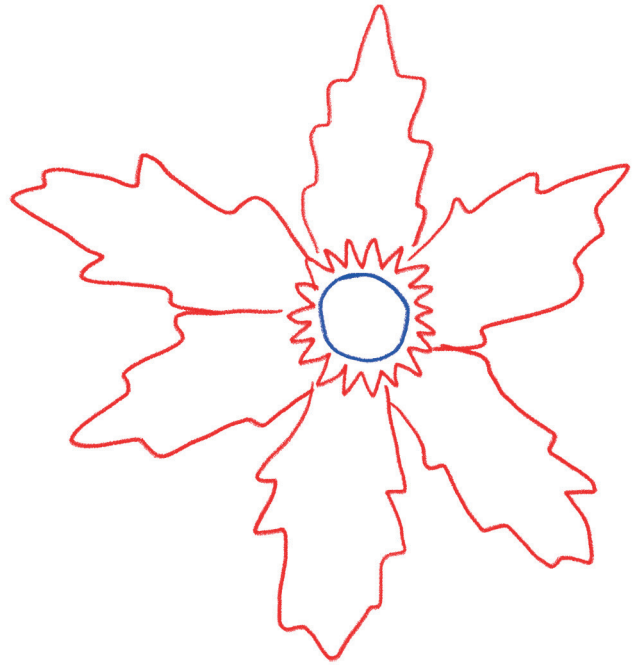
# Zuhaitza



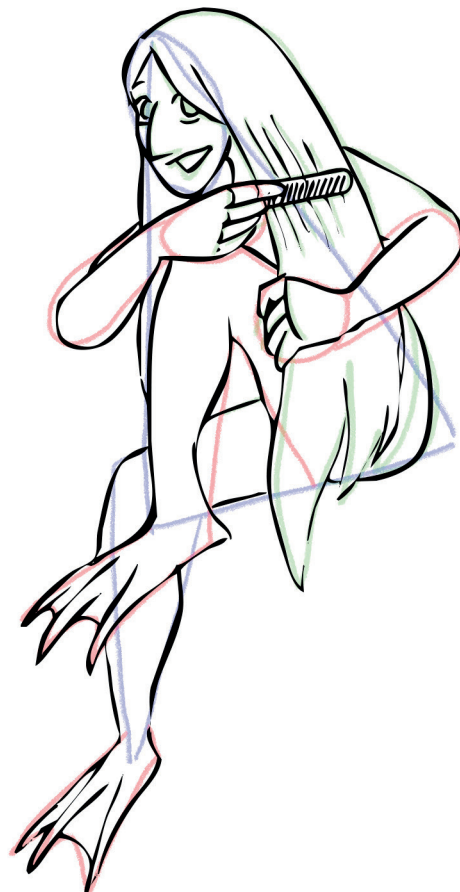
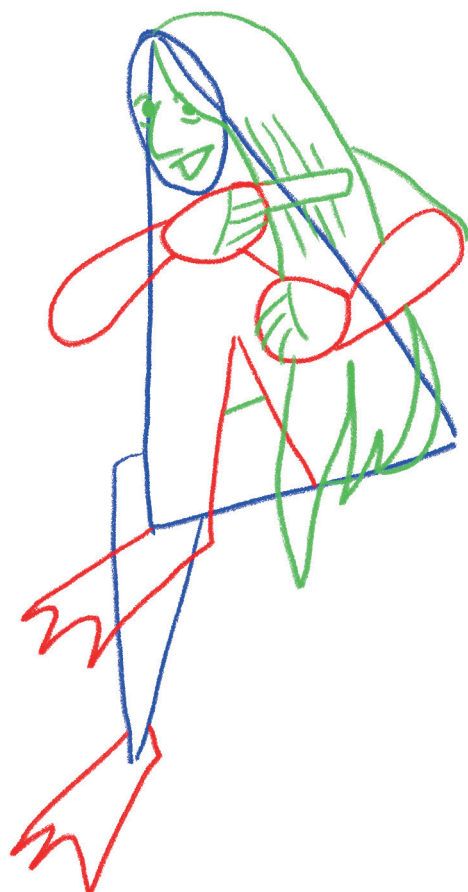
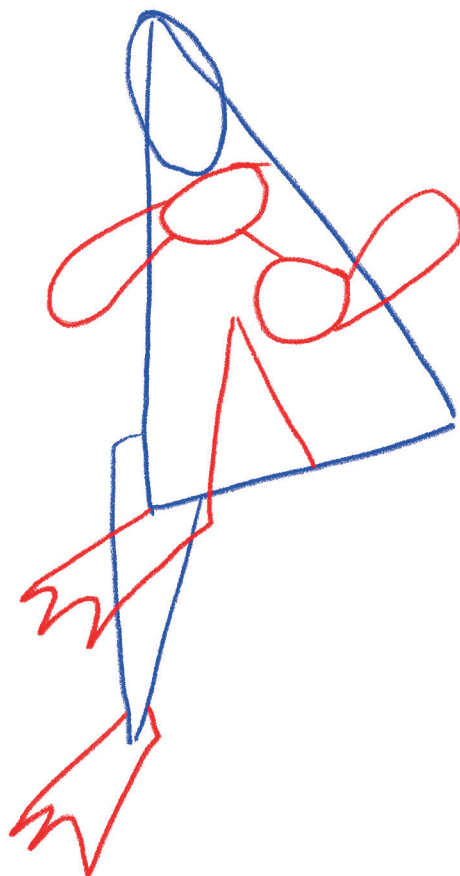
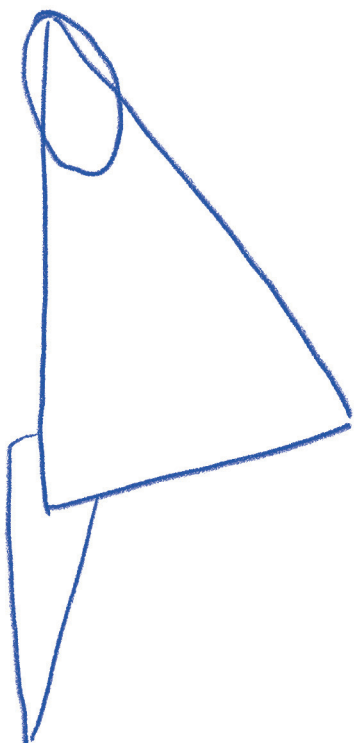
Mari



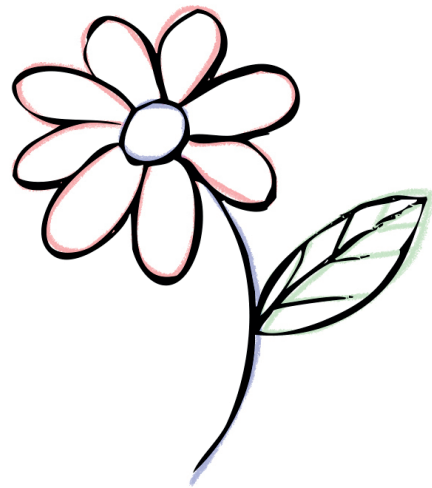
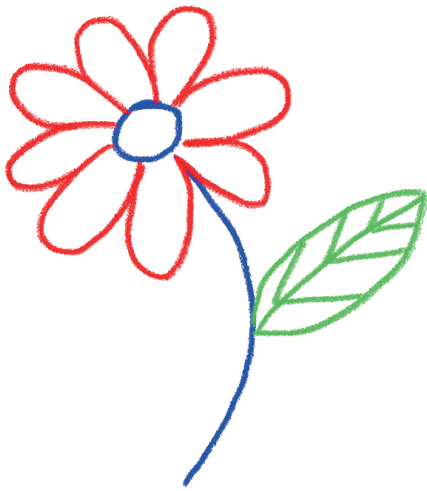
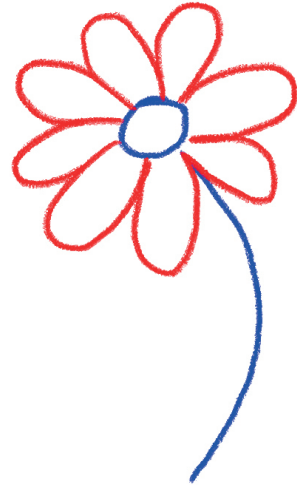
# Eguzkilorea



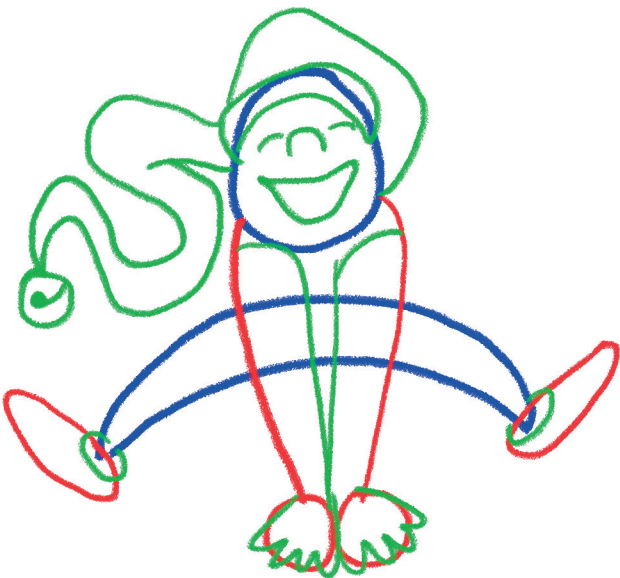
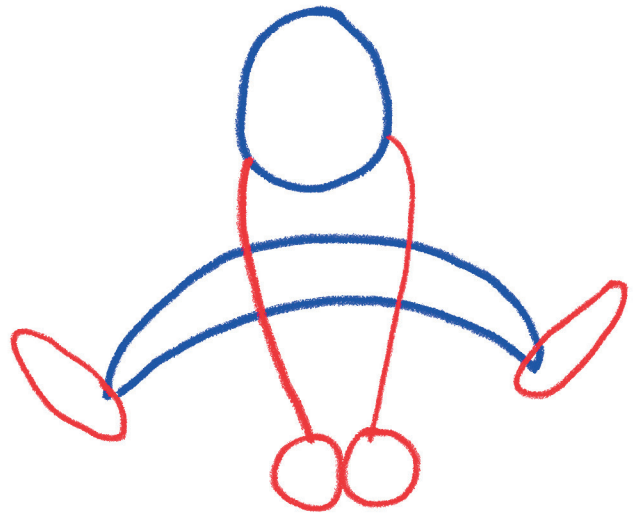
Lamia



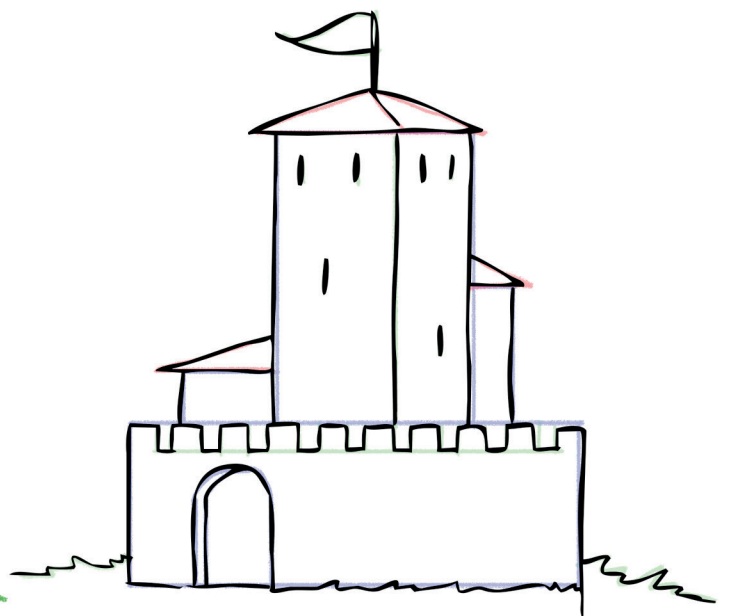
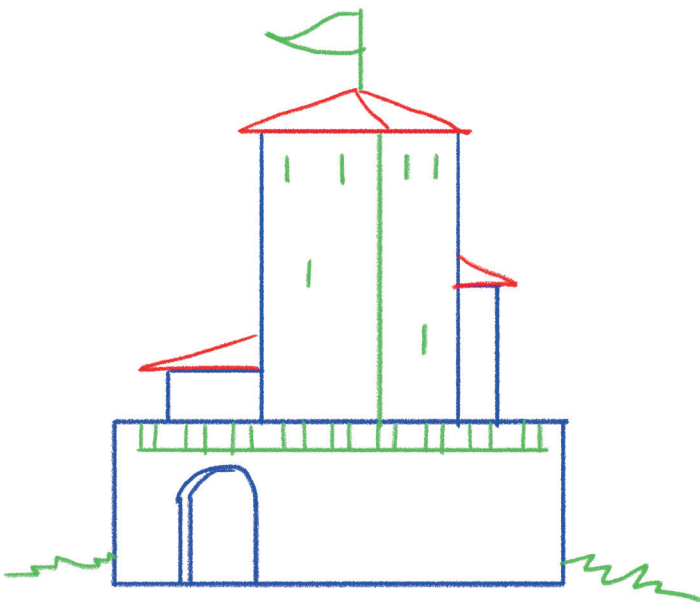
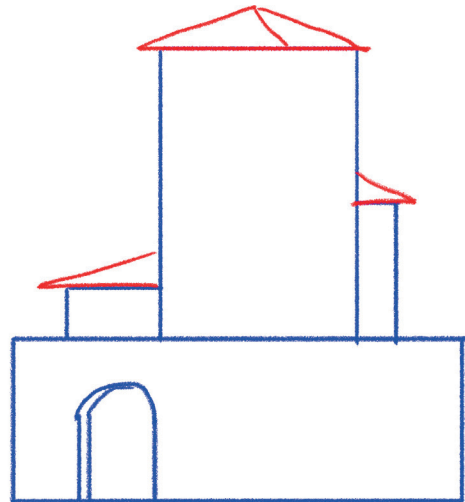
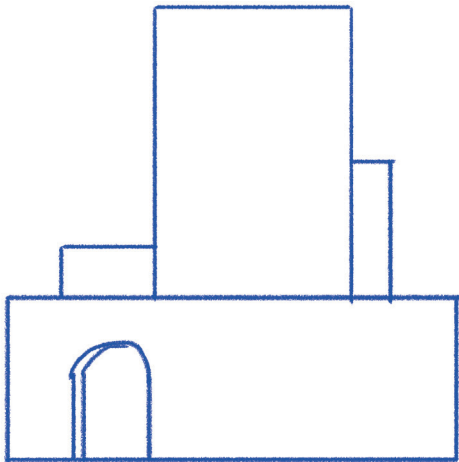
Lorea



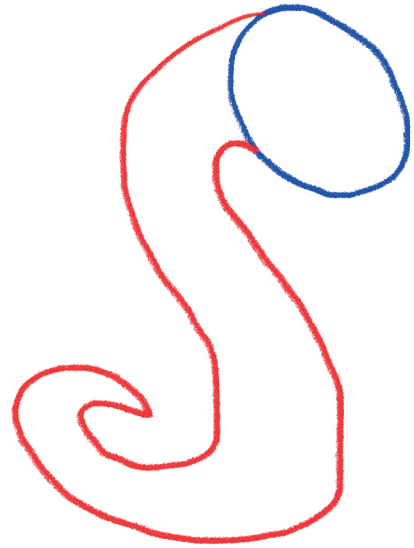
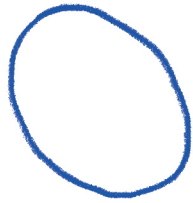
# Galtzagorria



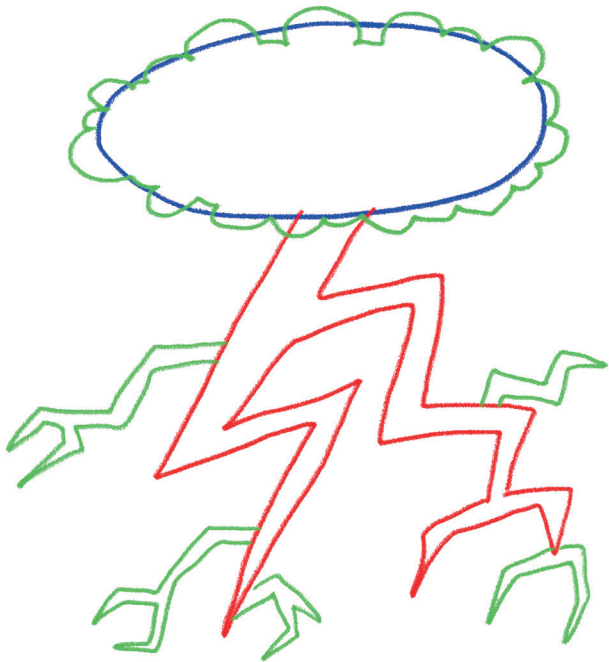
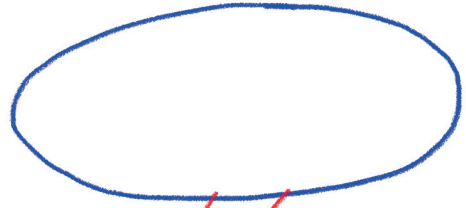
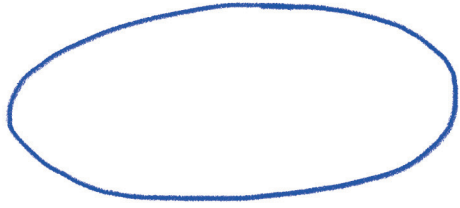
# Gaztelua



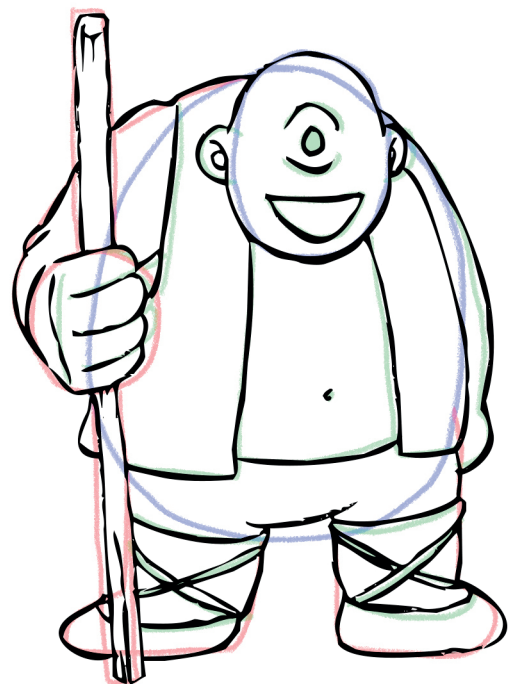
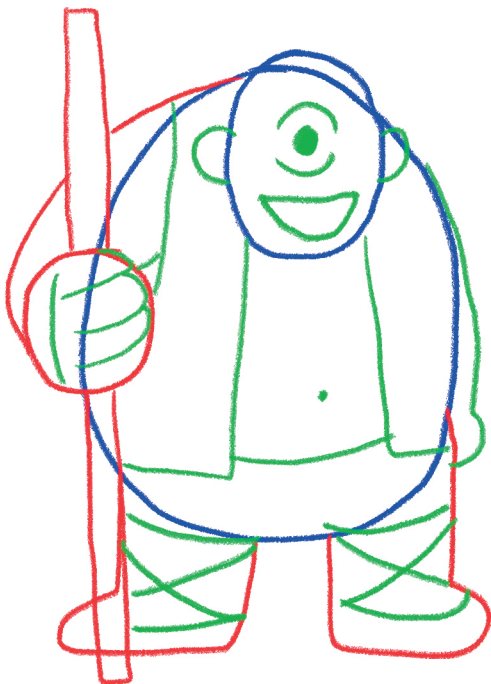
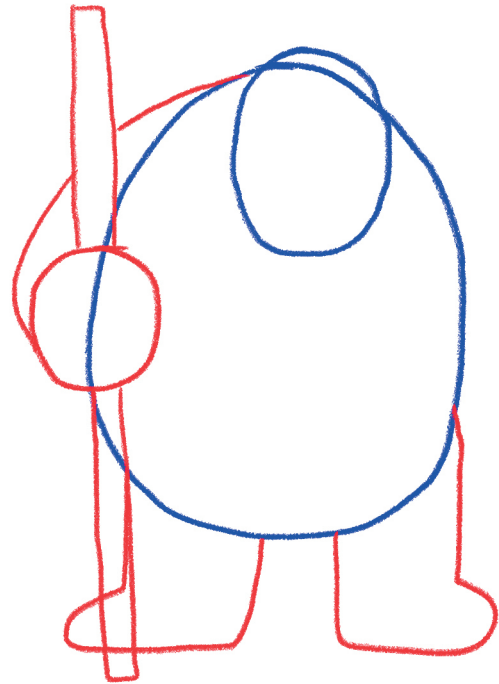
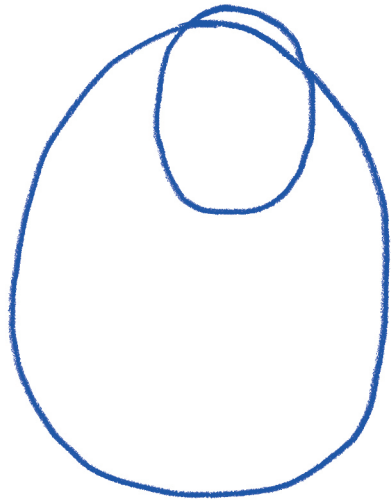
Sugoi



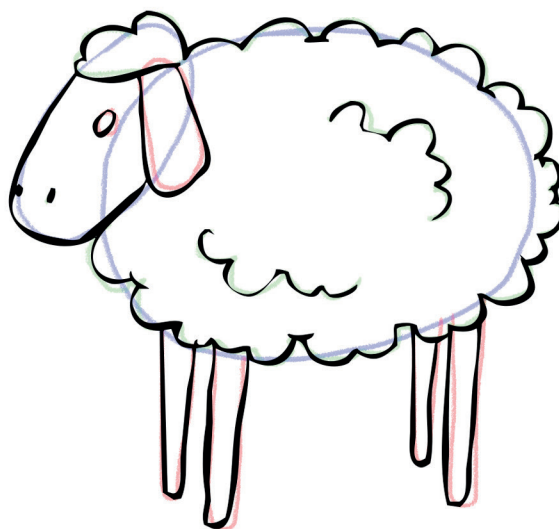
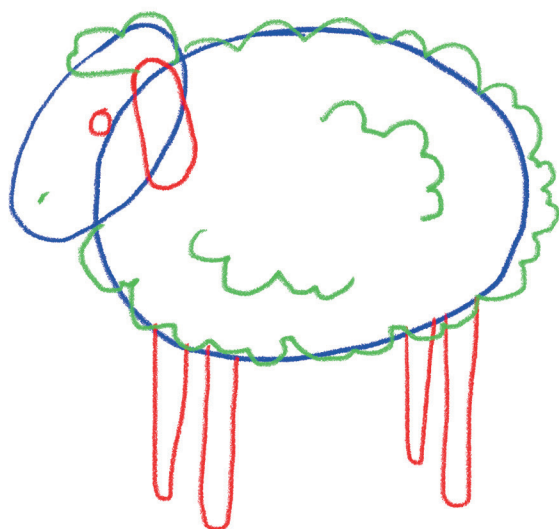
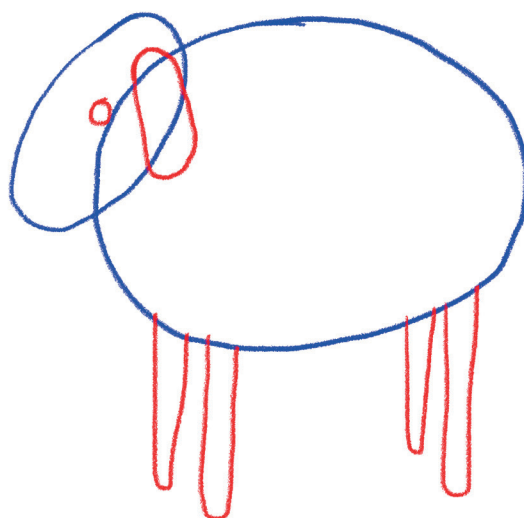
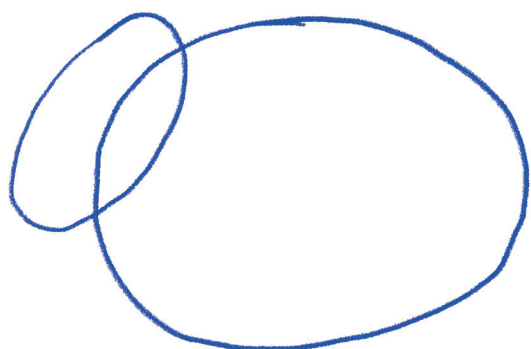
Trimišta



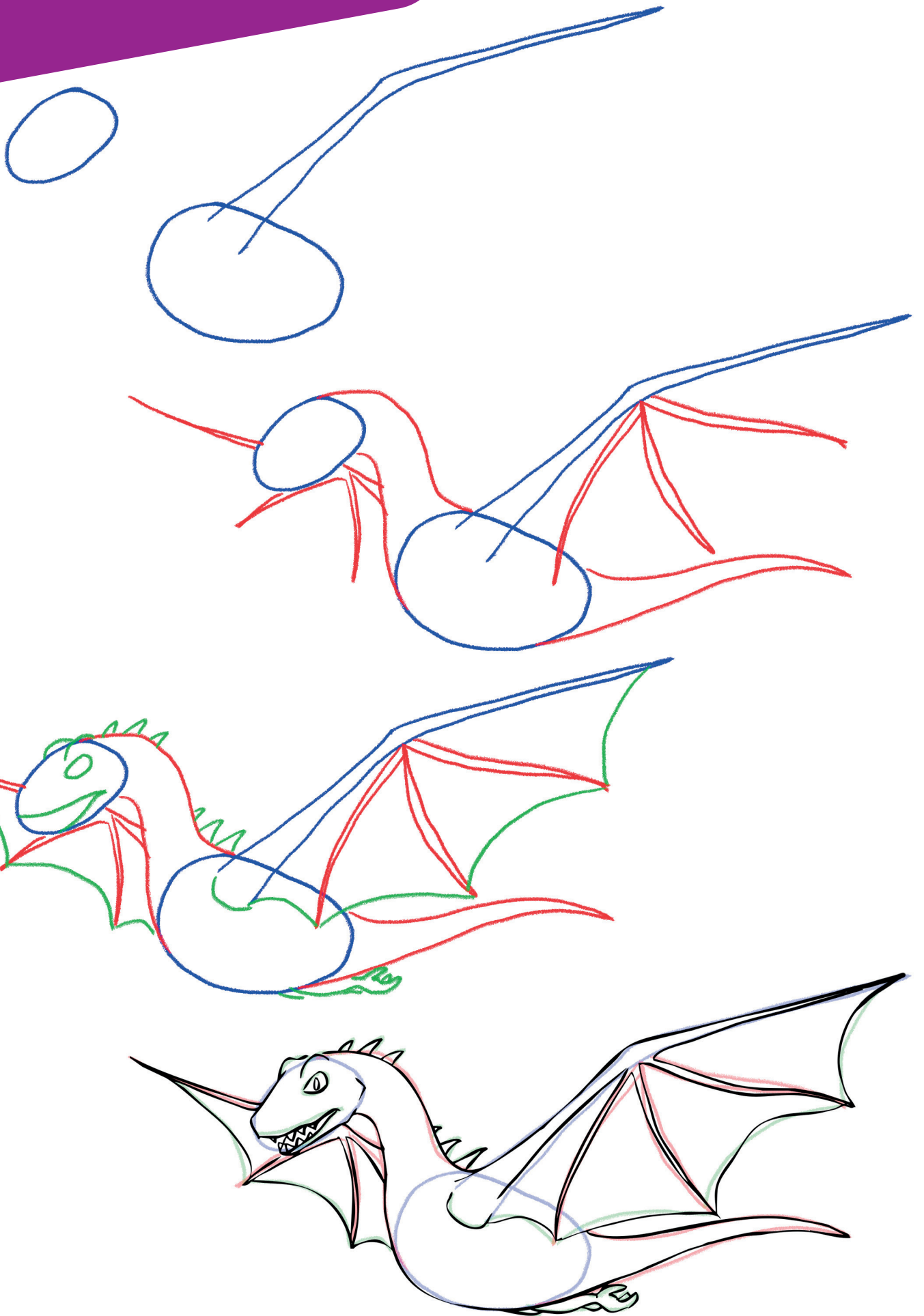
# Tartalo



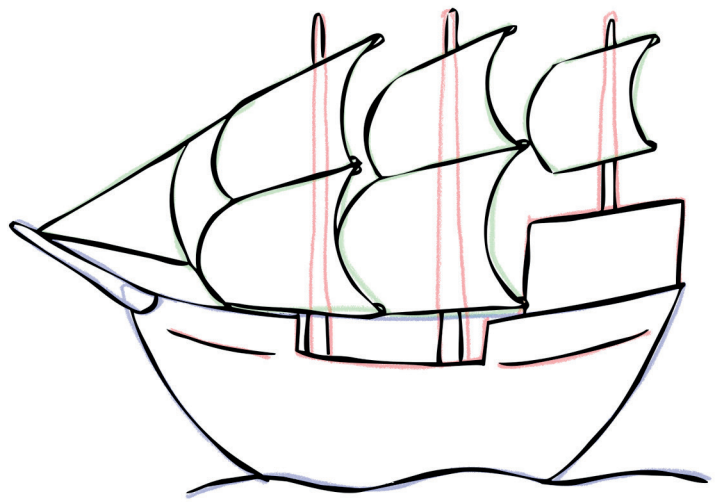
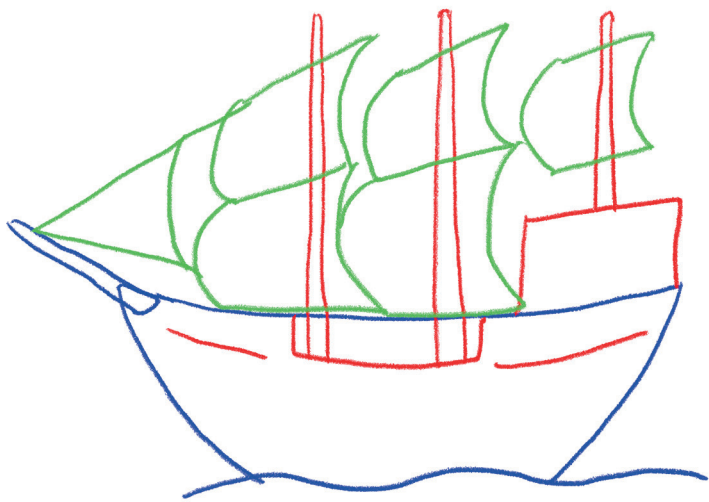
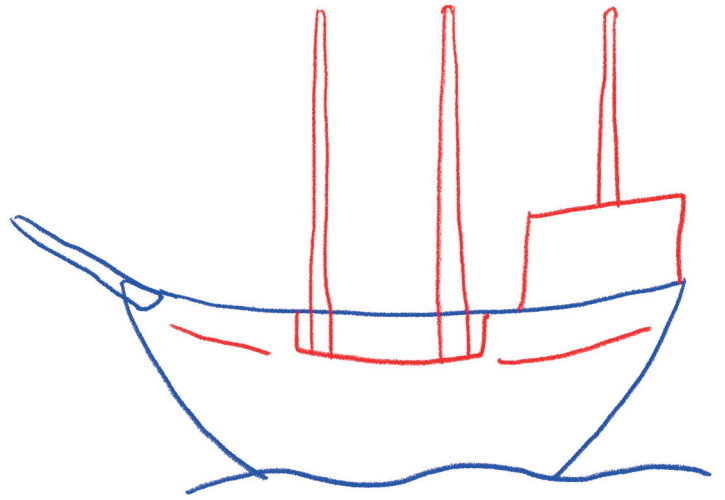
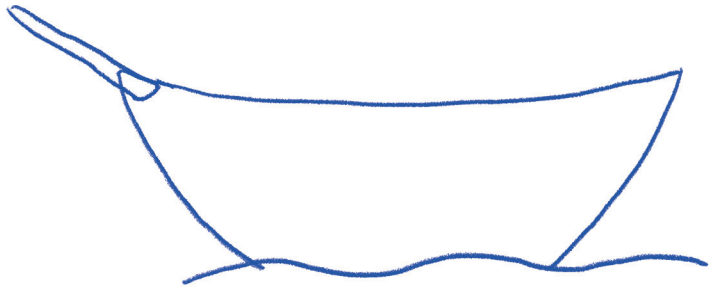
Ardia



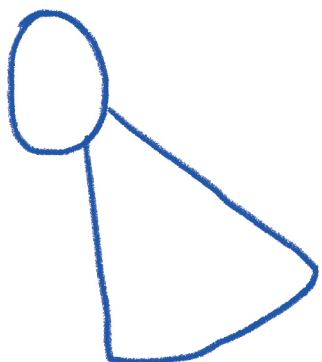
# Herenzuge



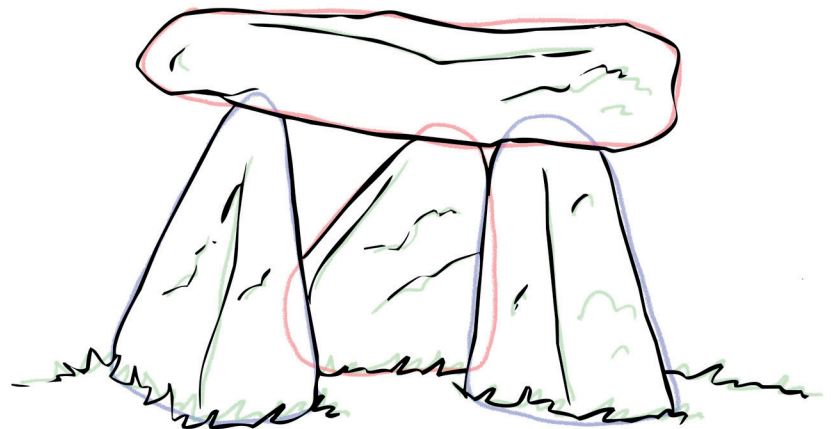
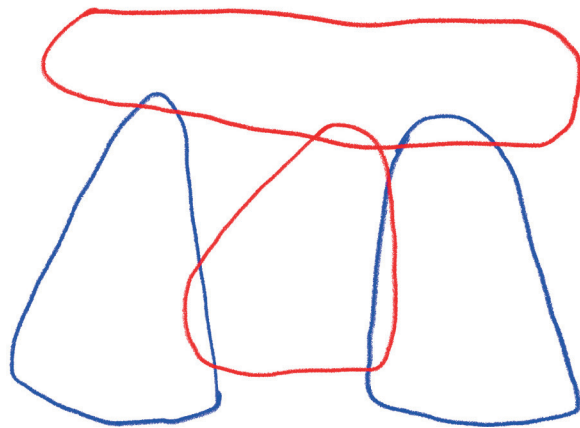
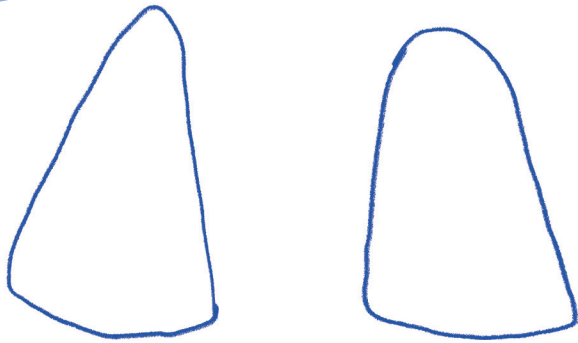
# Itsasontzia



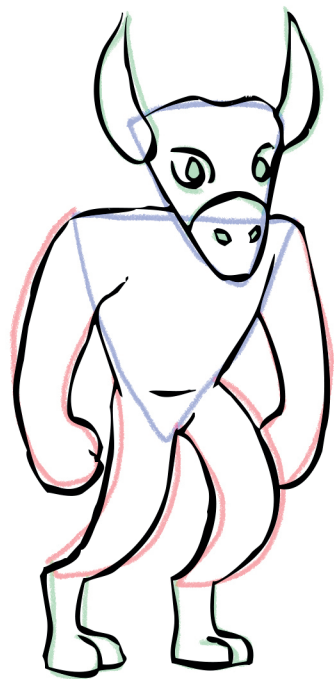
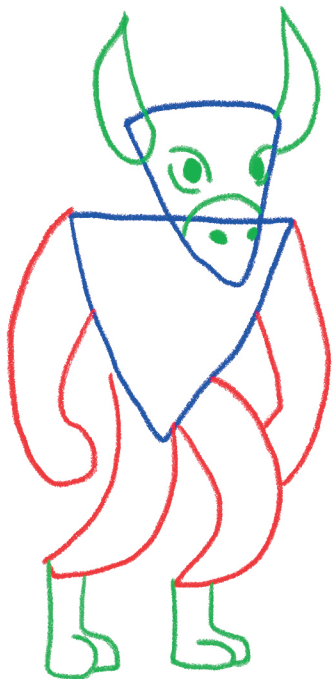
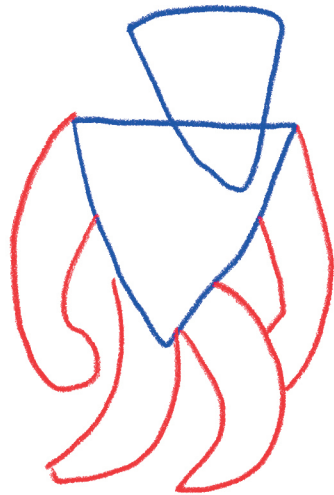
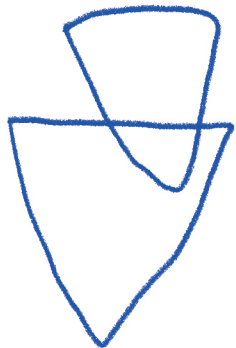
Gentila



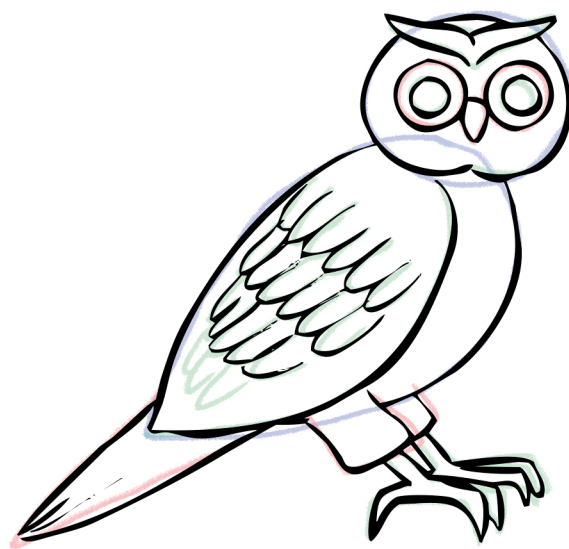
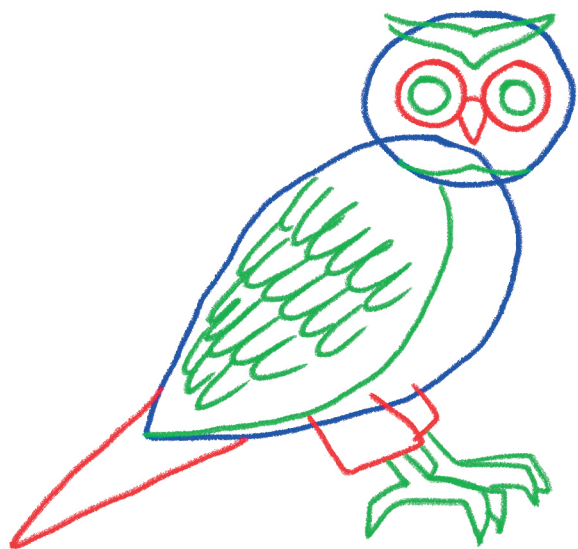
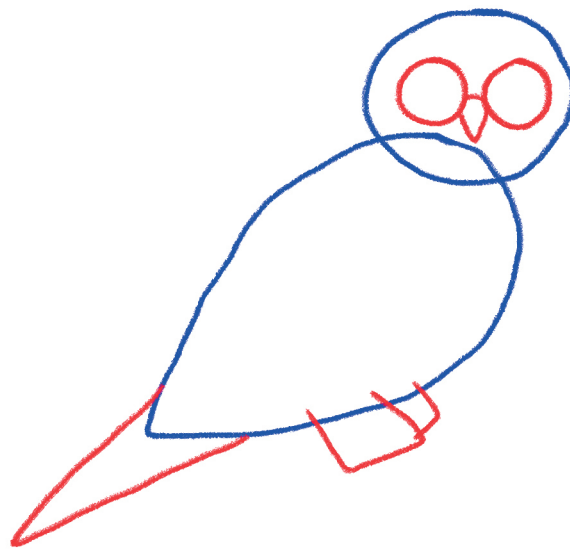
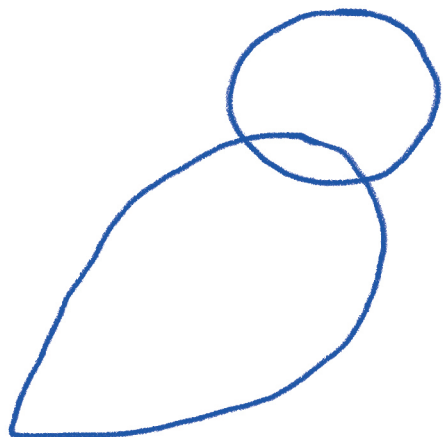
# Trifuharria



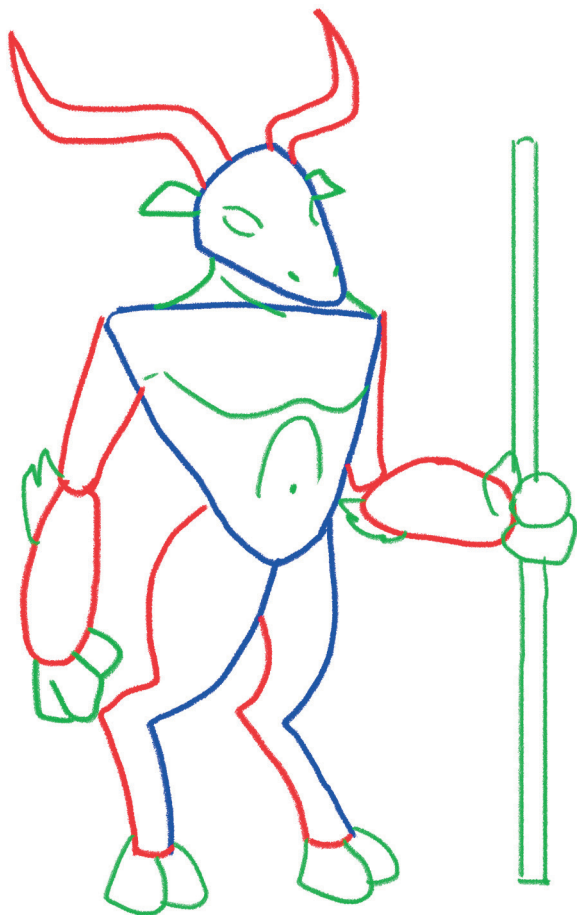
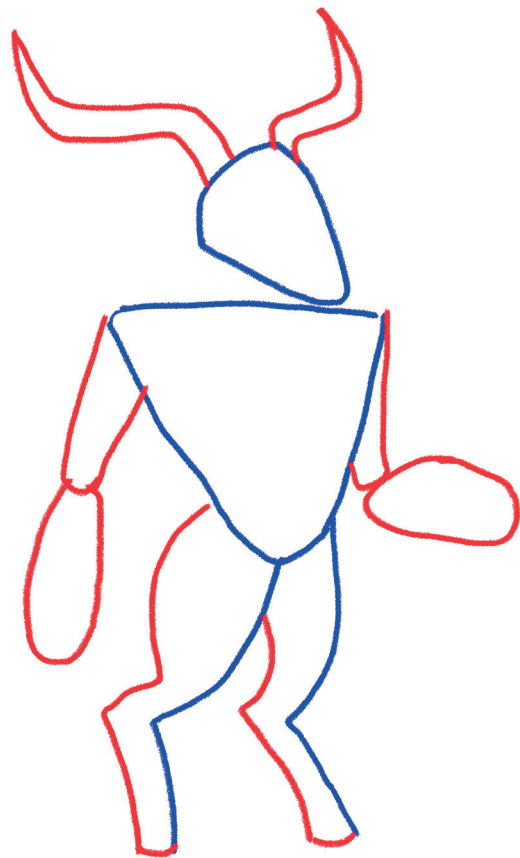
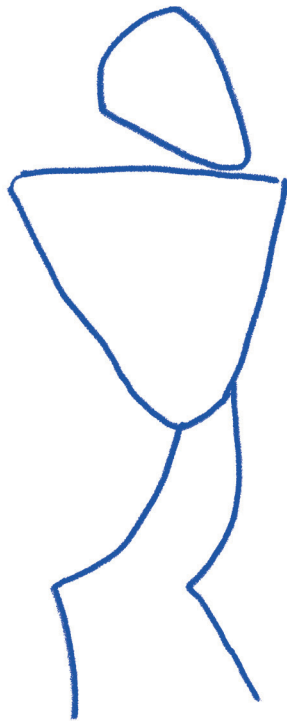
*Gaucho*



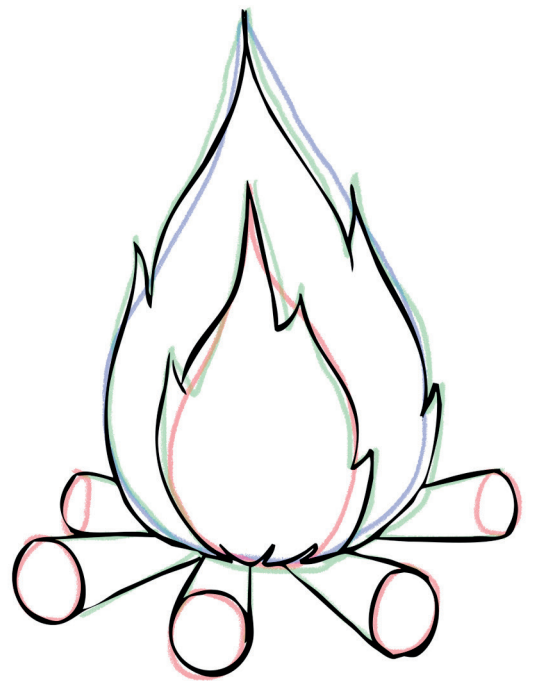
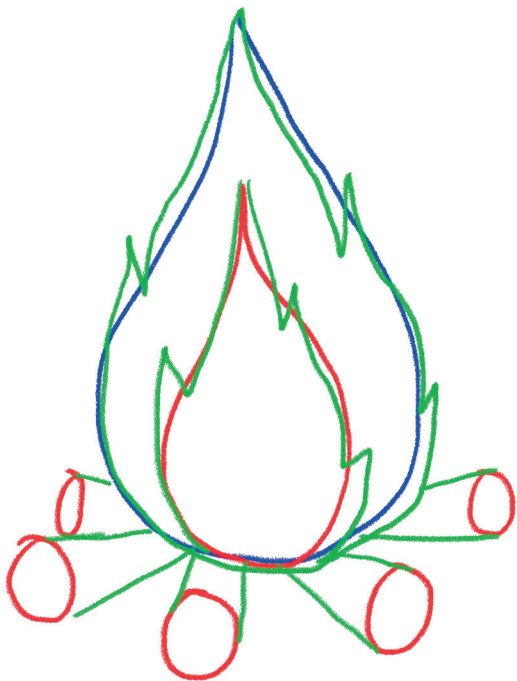
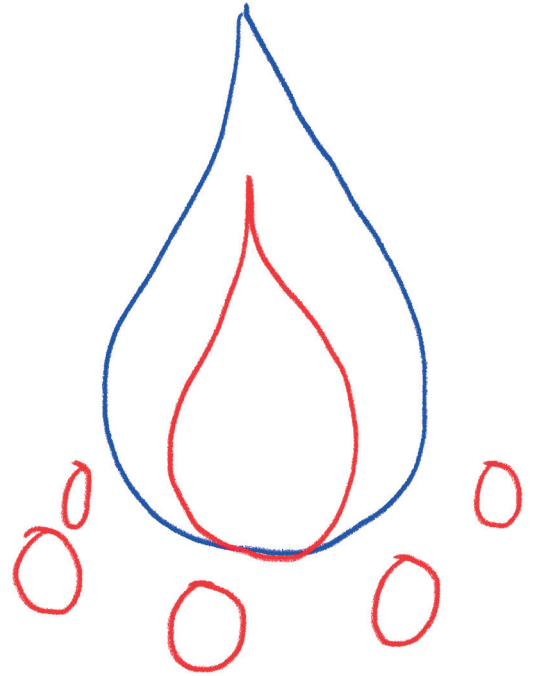
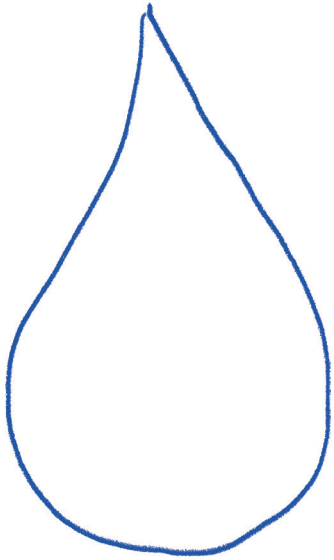
Hontza



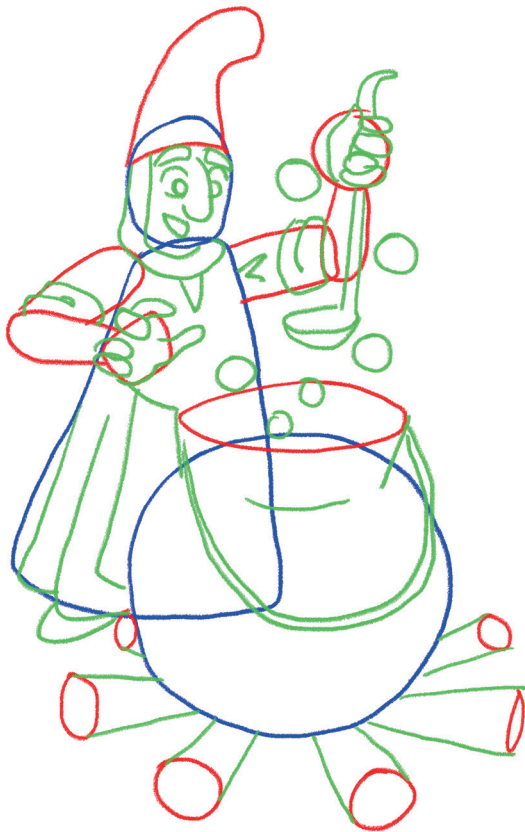
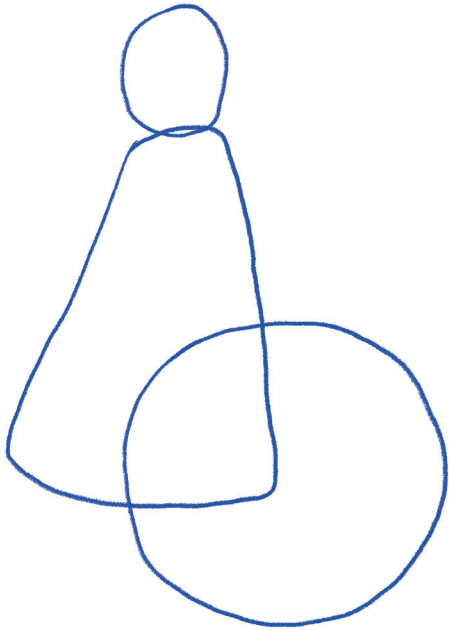
# Akerbeltz



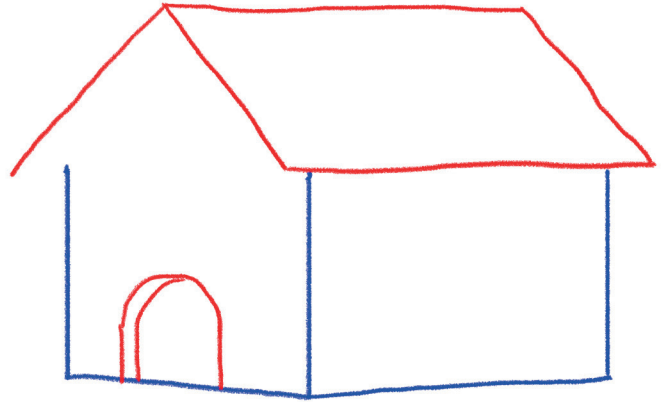
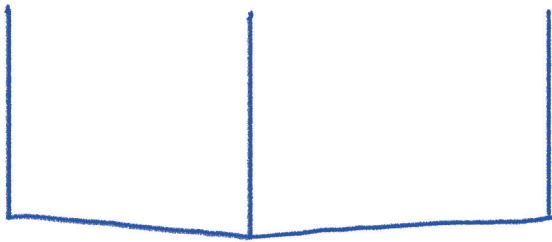
Sua



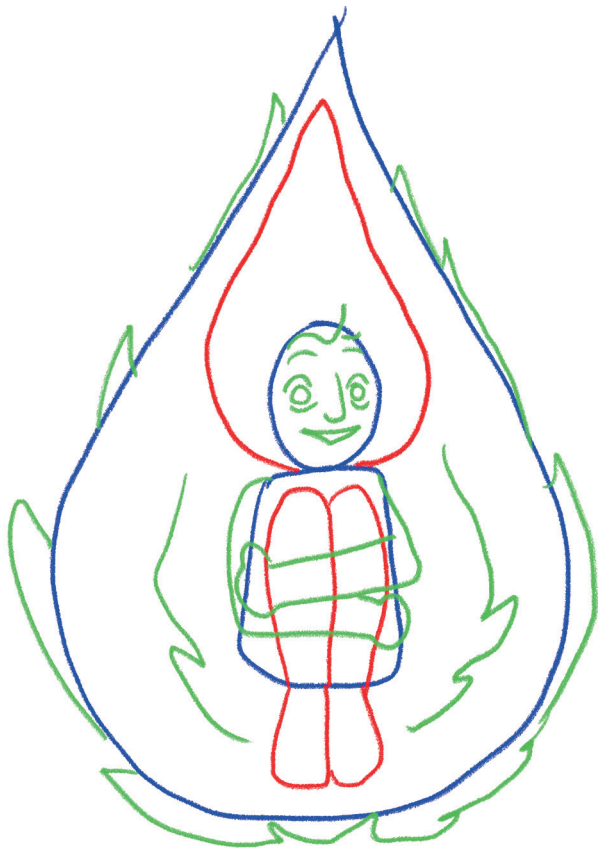
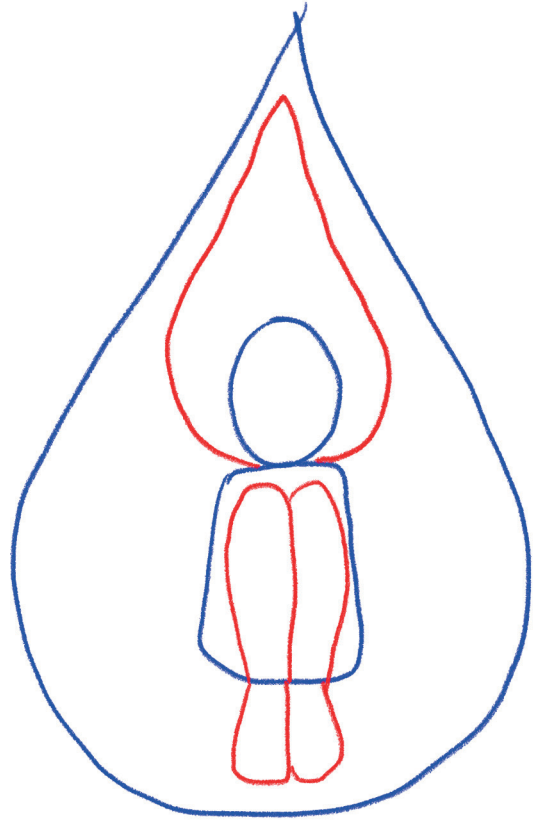
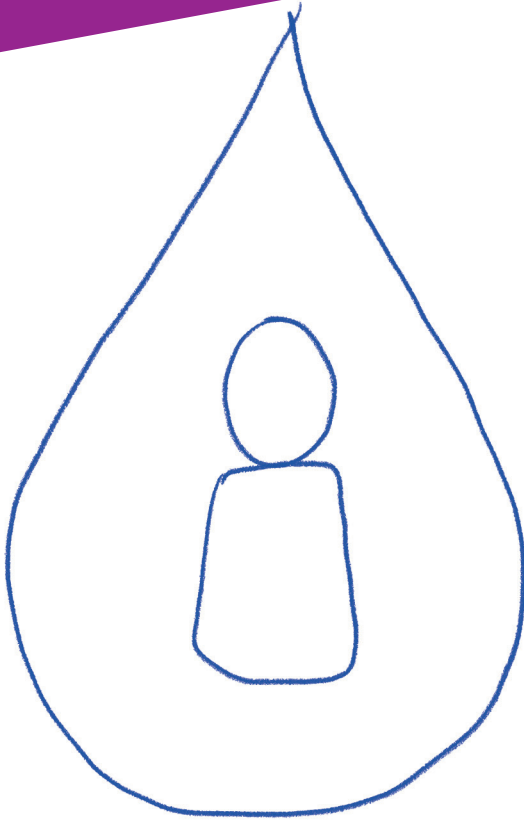
# Sorgina



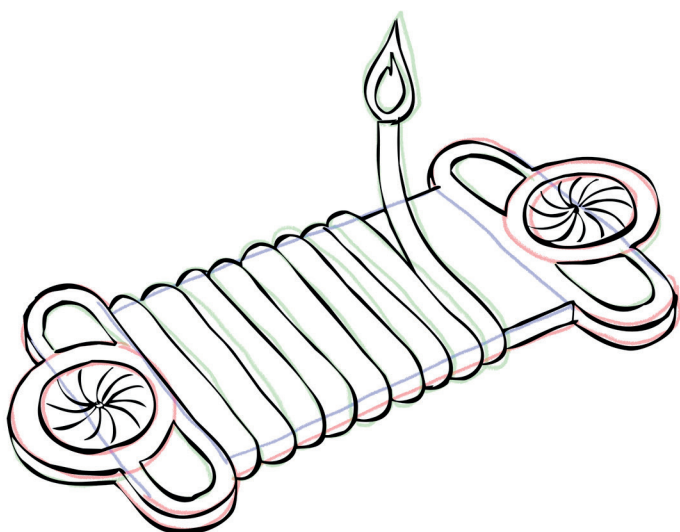
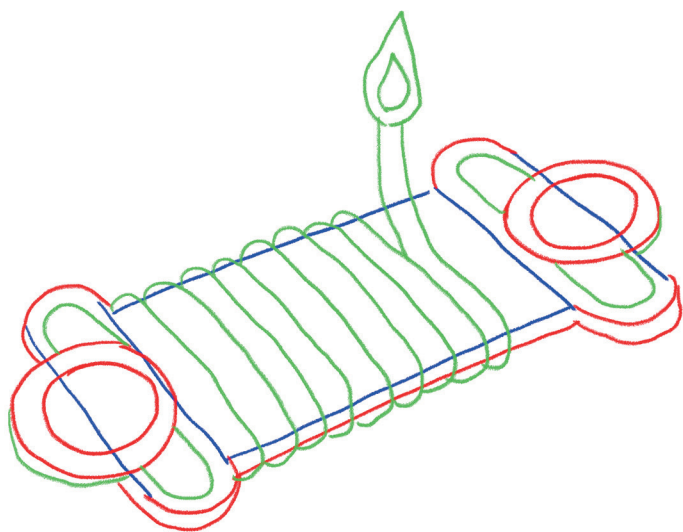
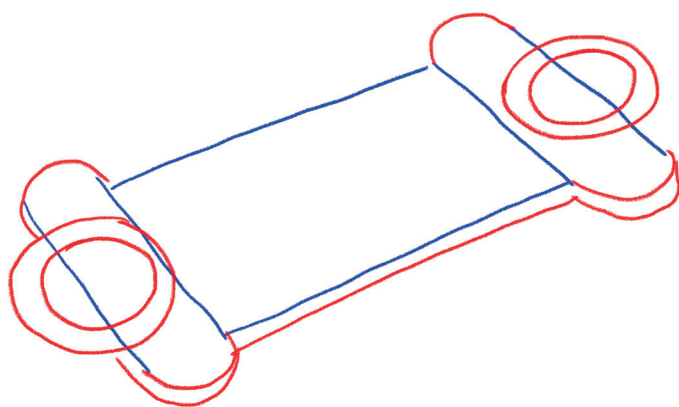
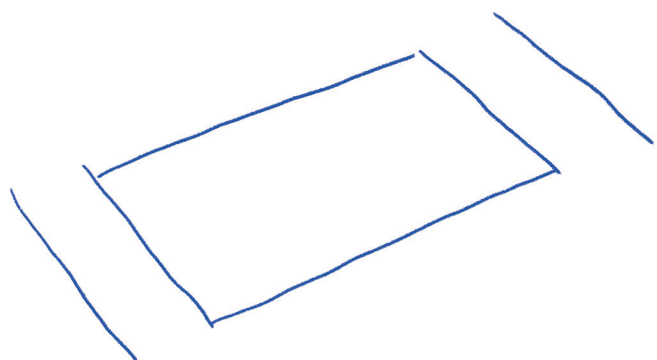
Etrea



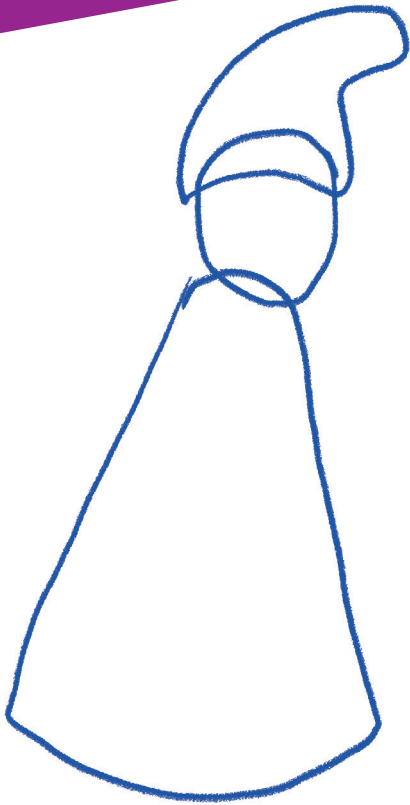
*Jauarqi*



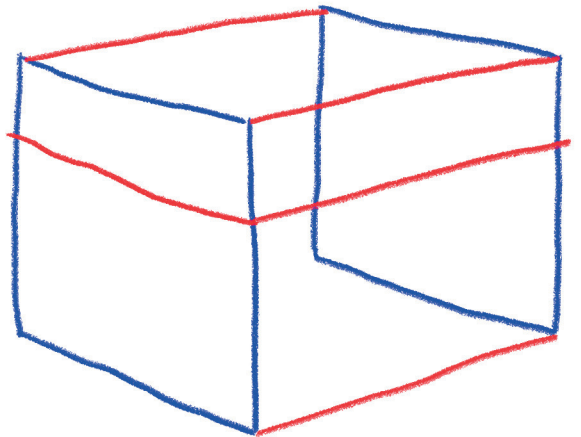
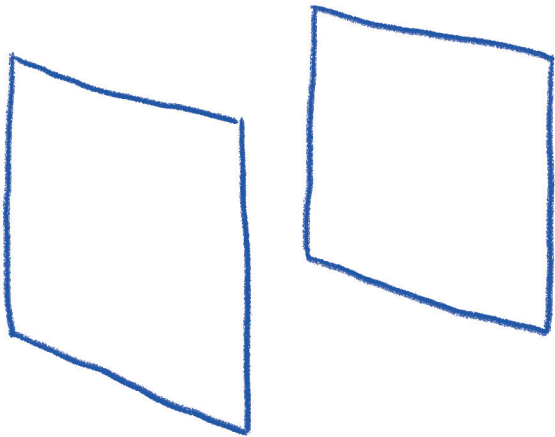
# Argizaiola



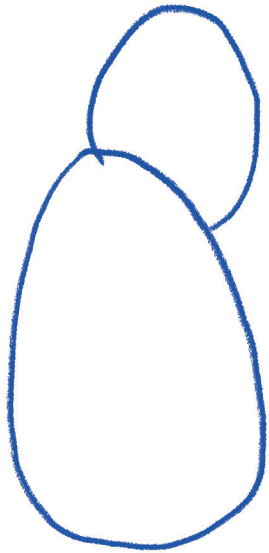
Mari Domingi



Oparia



Olentzero



Astoa

